

BEYOND RESILIENCE WITH AWS, COMMVAULT AND BRINEL

Resilience as the necessary foundation

Cybersecurity is the core of our lives today!

Secure by design needs to be the way forward

To have a cyber security strategy, you need an IT strategy in the first place; in the era of **AI** and **Cloud** of today that is based on **DATA**!

BCR și BT

Platformele BCR, Banca Transilvania și Alpha Bank, ținta unor atacuri cibernetice DDoS; DNSC: În ultimele două zile s-au înregistrat atacuri asupra unor organizații din sectorul financiar-bancar, cât și asupra unor instituții publice.

CERTSIGN

"În cursul zilei de astăzi am constatat, respectiv am fost informați de o situație ce poate fi asociată cu o suspiciune de atac cibernetice asupra infrastructurii informatice Certsign și tot grupul lor realizat azi noapte la ora 4.00."

Ministerul Sănătății

"În cursul nopții de 11 spre 12 februarie 2024 a avut loc un atac cibernetice masiv de tip ransomware asupra serverelor de producție pe care rulează sistemul informatic HIS. Ca efect al atacului, sistemul este nefuncțional, fișierele și bazele de date sunt criptate", anunță Ministerul Sănătății.

Zero Trust

TAROM

"Compania informează că în cursul zilei de astăzi a avut loc un incident de securitate izolat, în urma căruia au fost afectate mai multe fișiere de către un virus de tip ransomware."

Ucraina – energy disruption

Pe data de 23 decembrie 2015, o mare parte a regiunii Ivano-Frankivsk a rămas complet fără curent electric timp de câteva ore. Ulterior, serviciile secrete ucrainene (SBU) au descoperit programe malware în sistemele informatice ale mai multor companii regionale de distribuție a energiei electrice.

TRUST AS A BUILDING BLOCK FOR RESILIENCE



BEYOND RESILIENCE



- Broad Spectrum of Security Features
- Integration and Overlap with build-in security features
- Over 300 Security Features spread across the portfolio

Millions of clients use AWS security services

&



Robust and versatile set of data management solutions for complex envs

- VMs & physical servers,
- data protection for hybrid multi-Cloud
- SaaS backup and recovery for Cloud native

100.000 clients use Commvault security services

&



- Product Security focus and Specialties: Enterprise Design, Security Architecture, Automation and Orchestration
- 45 consultants, security experts and collaborators
- Education as our top weapon

200+ clients leverage our security expertise

ABOUT BRINEL



60+

MIL. EUROS
TURNOVER



200

PROFESSIONALS



500+

CLIENTS

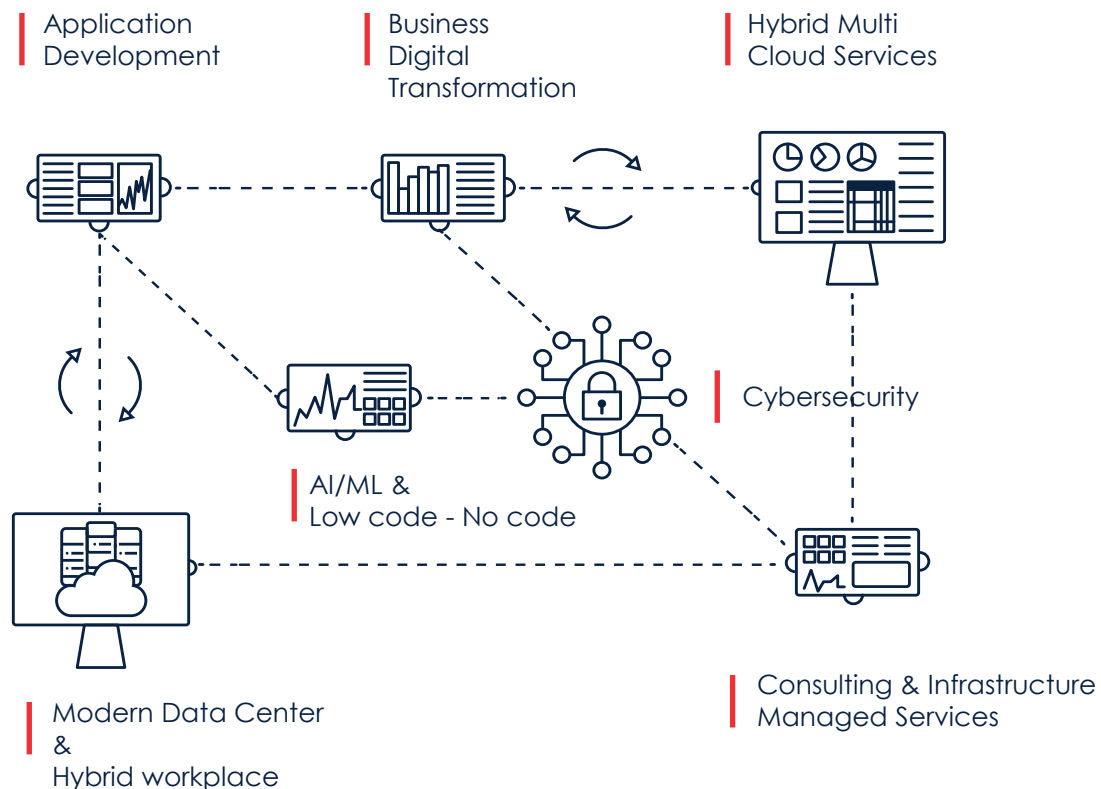


33

YEARS OF
EXPERIENCE

Making seamless digital transformation accessible for businesses in the Cloud and AI era, providing support at every stage of the project: Advisory, Design, Implementation, and Management services.

We provide advanced IT solutions and services: **modern & sustainable Data Center** solutions, **digital workplace**, **cloud services**, **application modernization** using open-source technologies or low-code/no-code solutions, **AI/ML**, business transformation using **ERP**, cybersecurity solutions, consultancy and managed services. We offer tailored solutions to our customers, regardless of their stage in the digitalization process. Additionally, our own IP (**BRINEL Digital Tools**), enhance interaction with your internal teams, clients, and partners.



BRINEL PART OF iQANTO, GROUPE SNEF



About iQanto:

Born from the merger of companies within the Snef Group, including **BRINEL**, **iQanto** brings together the digital and robotic expertise of nearly 900 collaborators in an integrated and expanded value chain centered around digital transformation: Data Science, UX/UI, IT, Cloud, Cybersecurity, Automation, Internet of Things, Robotics, and Collaborative Robotics (Cobotics).

- Europe
- Africa
- Australia
- Brazil
- United States

1,6

Billion euros in turnover

12.500

Collaborators

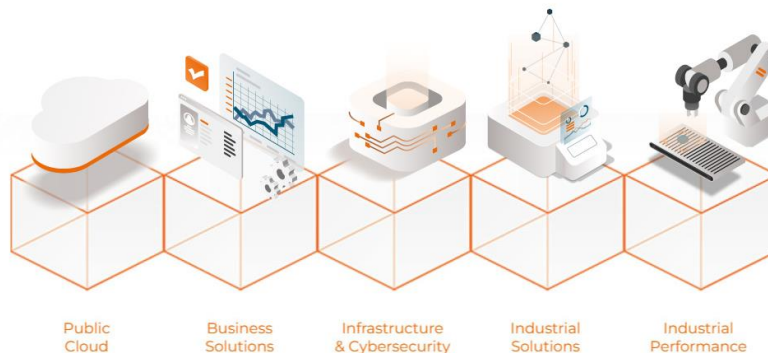
SNEF

FOURÉ
LAGADEC



iQANTO

WATT
DESIGN & BUILD



About the Groupe **Snef**

With the ability to intervene end-to-end throughout the life cycle of your installations, we have built our group around a broad spectrum of technical skills. We are engineers/designers, integrators, maintainers, and operators of multi-technical solutions in the fields of energy, mechanics, and digital technology. We continuously reinvent ourselves, advocating for the digital revolution, Internet of Things, Big Data, cybersecurity, Industry 4.0, Artificial Intelligence, and Mixed Reality.

Since 2018, BRINEL has been a part of the Groupe SNEF.



UNLOCKING CLOUD SUCCESS

WHY BRINEL

Benefit from BRINEL's **strategic alliances with AWS**, ensuring top-tier cloud solutions.

Our expertise in both **Public and Private Cloud** delivers cost-effective, secure, and scalable **hybrid architecture solutions** tailored to maximize your business outcomes.

With over three decades of advisory excellence, BRINEL is your premier partner for **successful cloud transformation**.

ML / AI Competency



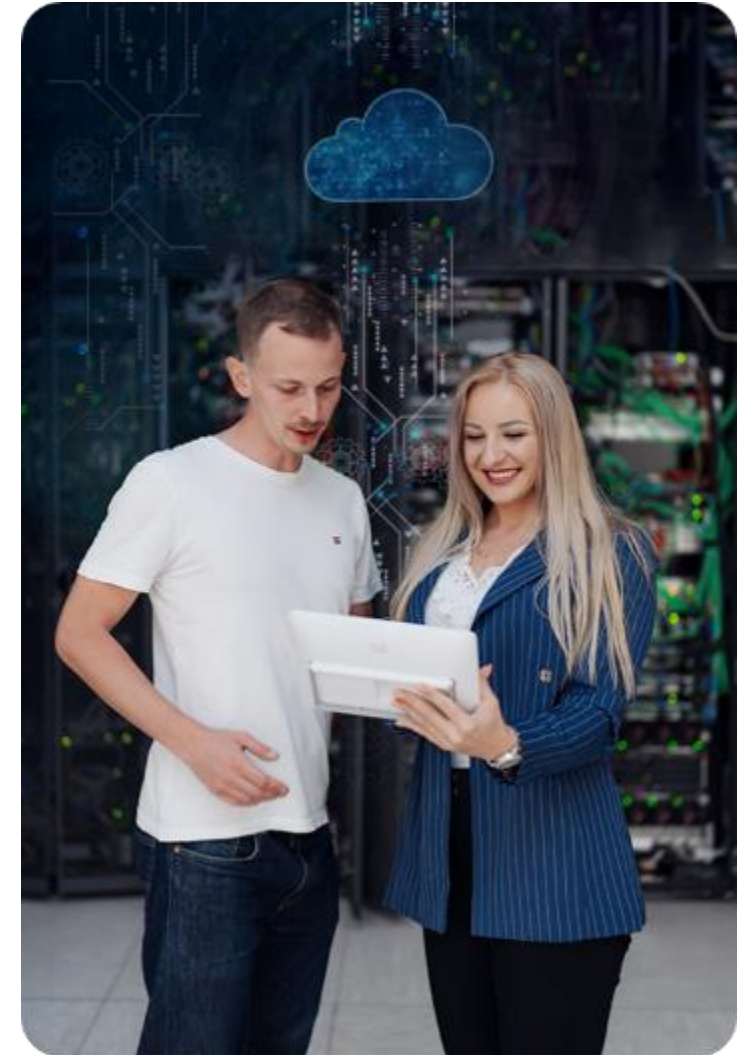
- ML Services Competency
- Migration Competency
- Well-Architected



100+ CERTIFICATIONS

DATA INSIGHTS USING ML/AI/GENAI ON AWS:

- Predictive Maintenance,
- Intelligent Document Processing,
- Fault detection,
- Demand planning,
- Content generation using GenAI.



CLOUD APPROACH

01 CLOUD ADVISORY

We analyse your existing infrastructure, evaluate your goals, and recommend the most suitable cloud solutions to drive efficiency, scalability, and innovation.

02 CLOUD MIGRATION

We meticulously plan and execute the migration of your applications, data, and infrastructure to the cloud, leveraging industry best practices and advanced tools.

03 BUILD FOR CLOUD

Our experts transform your ideas into scalable, secure, and cost-effective solutions

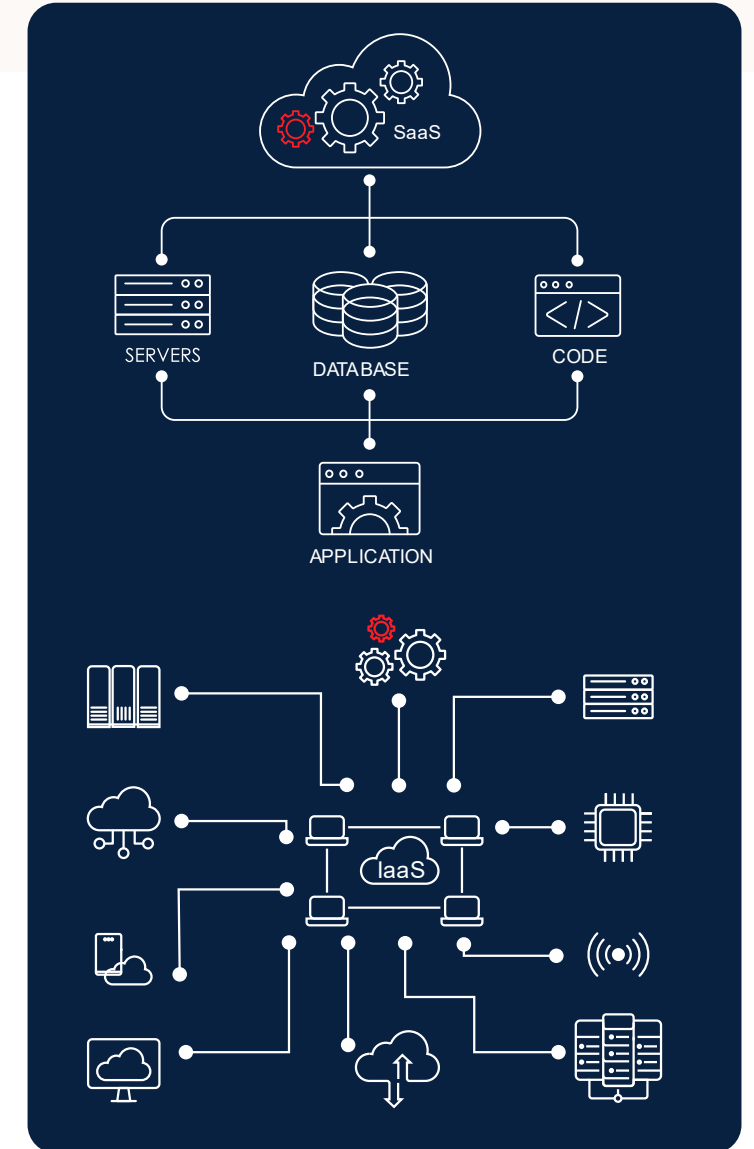
04 CLOUD MONITOR & MANAGE

Our team of dedicated professionals monitors your cloud environment 24/7, proactively identifying and resolving any issues to ensure maximum uptime.

KEY CLOUD OFFERINGS

Cloud Protection for Enterprise enabled by native support for Commvault for AWS services:

- Cloud BackUp as a Service(BaaS)
- Disaster Recovery as a Service(DRaas)
- Virtual Appliances



CYBERSECURITY

Customized plan to secure your data

01 CLOUD & INFRA SECURITY

Fortifying the digital ecosystem, shielding sensitive data, preserving operational continuity.

02 PLATFORM & APP SECURITY

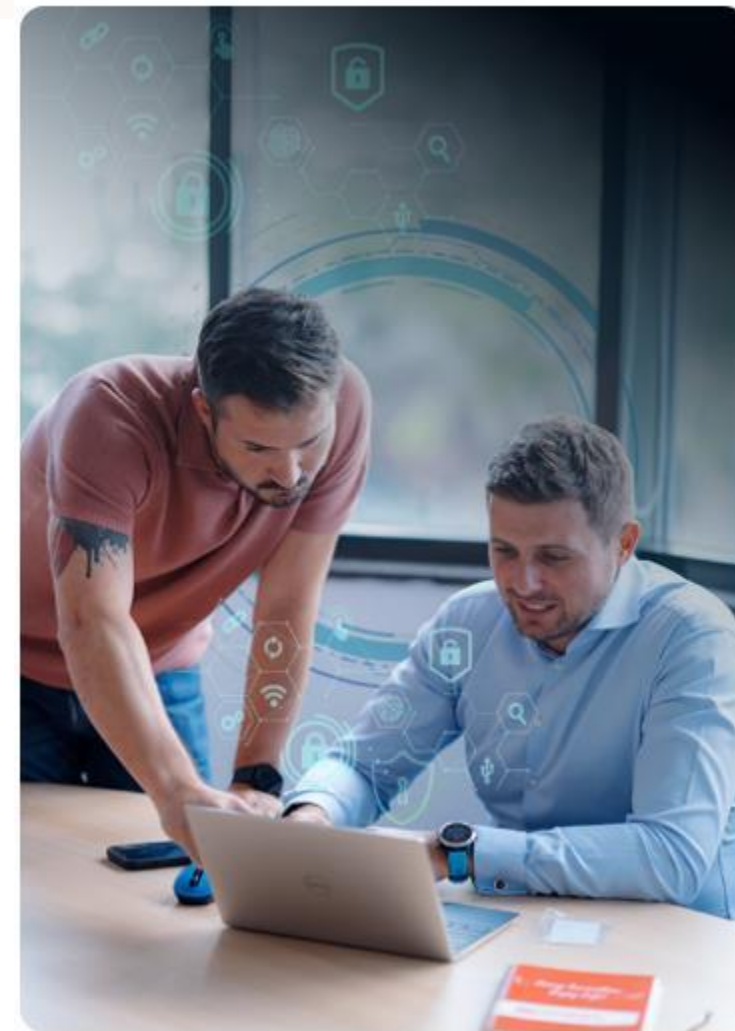
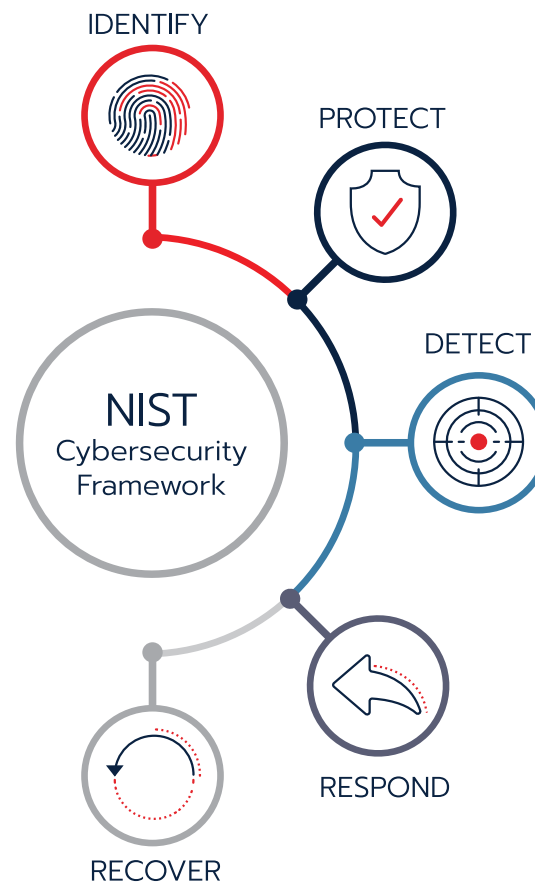
Ensuring robust platform and app security, safeguarding the digital infrastructure and software applications.

03 DATA SECURITY & GOVERNANCE

Ensures the confidentiality, integrity, and compliance of the data assets, fostering a culture of trust, innovation, and responsible data-driven decision-making.

04 IDENTITY & ACCESS MANAGEMENT

Empowers seamless yet secure access to resources, bolstering productivity, minimizing risks, vigilant user identity verification and comprehensive access controls



CLIENTS SUCCESS STORIES



Cloud App migration for **HealthCare**

Project Insight

Software provider for HealthCare industry wanted to migrate in Cloud for better scalability and security of Long-Term Care Application (personal safety alarms).

Project Description

Managed Infrastructure Services to design and implement Cloud Secure Environment Migrate and operate the Long-Term Care application, using **Azure** services. Monitoring and protect the environment using Microsoft **Defender for Cloud** and **Azure Monitor**.

Automation for deployment and lifecycle in Azure Kubernetes Service (**AKS**).

Our assets on this project

Strong secure design for critical cloud applications for optimal operation and continuous development, with an excellent **feedback from client R&D team**.



ML/AI Connected Football Enhancing **Sports** through AI

Project Insight

The objective was to explore the capabilities of **Edge computing** in contexts where the cloud-only processing would not provide satisfactory results. This project is realized in partnership with AWS.

Project Description

Build and train **Machine Learning** model, optimized for edge computing devices to accurately determine the ball and players' positions throughout the football game and track the current state of the game. Implement the game logic, **video processing pipeline** to display the game results in real-time. Integrate the **computer vision** application with the web-app and cloud database

Our assets on this project

Because of its simplicity and effectiveness, it can be extended to other use-cases, streamlining operations, enhancing customer experiences, and gaining valuable insights and driving innovation.



Cybersecurity solution for **Financial Public Entity**

Project Insight

The client needed backup and data recovery processes, as well as for data archiving, resilient to hardware failures, with a storage capacity and rapid scaling.

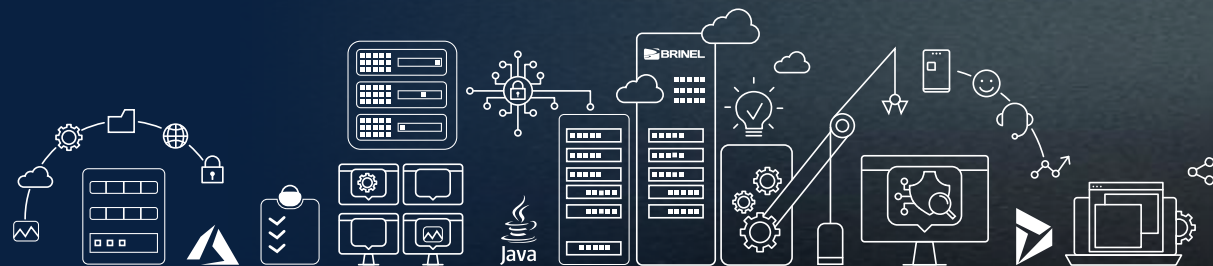
Project Description

The implemented enterprise-scale solution consists of a dedicated hardware infrastructure: HPE Apollo 4200 Gen10 Server and the Commvault HyperScale X software component (Commvault Complete Backup & Recovery for VMs and Physical Servers, Commvault Backup & Recovery for Mail and Cloud Applications).

- Integrated management, orchestration, and monitoring tools for backup and recovery
- Hyperconvergent hardware architecture for high availability and easy scalability hybrid-Cloud
- Integrated data protection mechanisms: replication, encryption, etc.
- Integrated performance analysis and optimization mechanisms: compression, deduplication, AI



CONTACT



Cluj-Napoca
4 Nicolae Titulescu Blvd



cluj@brinel.ro



www.brinel.com

Bucharest
U CENTER 2
206-218 Serban Voda Route

bucuresti@brinel.ro

Follow us on:

